



## SUPERIOR COURT OF CALIFORNIA COUNTY OF RIVERSIDE

### PUBLIC NOTICE

#### **Construction Affecting Access to Larson Justice Center**

- **Location:** Indio, Oasis Street affecting access to Larson Justice Center.
- **Description:** The City of Indio and County of Riverside are repaving Oasis Street from Highway 111 to Southern driveway of county parking structure. **See map below (construction area highlighted in purple).**
- **Customer Impact:** Oasis Street closure from **Tuesday, April 12, 2022 to June 21, 2022 (subject to change)**. The driveway Entry and Exit on Oasis will be closed. Access to the court will be from Jackson to west on Plaza Street. There may be higher traffic during mornings, lunch, and at the end of court business on Plaza Street especially during high jury calls.
- **Action Taken:** The City/County project will include road closure signs, detours signs, and Access to Court signs directing traffic accordingly.

[www.riverside.courts.ca.gov](http://www.riverside.courts.ca.gov)

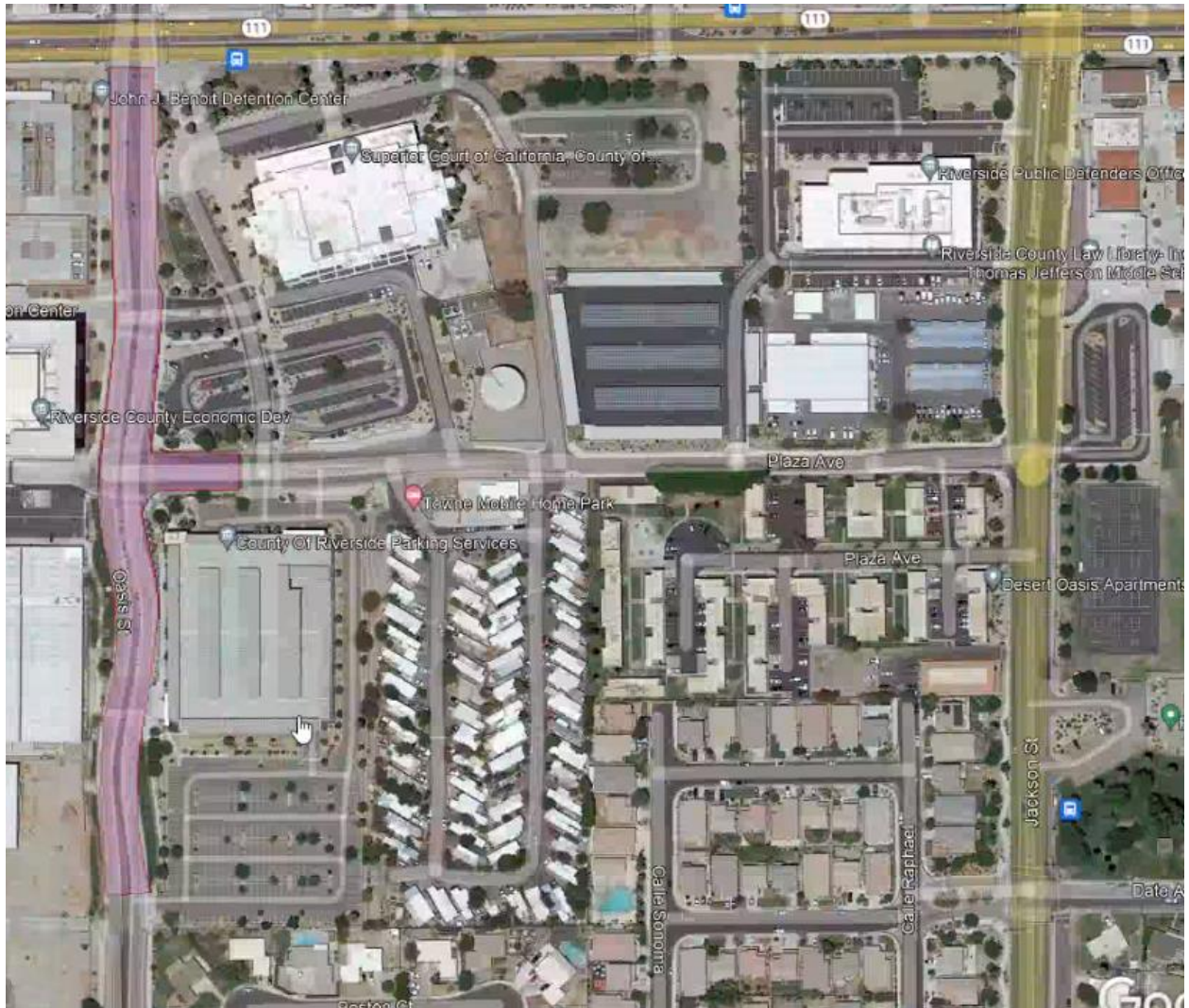
- **Estimated Resolution Time:** Oasis Street closure from April 12 to June 21, 2022 (subject to change). Continuing project after completion of Oasis on Highway 111 through late December 2022 (subject to change).

**Additional details:**

- There is a route through and around the back of the parking structure from Oasis that will allow access to Plaza. There may be a flag person monitoring traffic at the driveway. The Project will monitor use and try to allow access throughout the Oasis construction phase, however, it may require intermittent closures as the driveway is also part of the construction.
- The County is making the parking structure open and free through the duration of the Oasis paving (Oasis paving project only). This will be free to anyone, including jurors and court staff.
- There is also a continuing project after completion of Oasis on Highway 111 through late December 2022 (subject to change).

**Construction of Oasis highlighted in Purple. Access to Court will be from Jackson Street to west on Plaza. The south driveway to the county parking structure will be available to access Plaza from Oasis (subject to intermittent closure and may be monitored by construction flag person).**

[www.riverside.courts.ca.gov](http://www.riverside.courts.ca.gov)



[www.riverside.courts.ca.gov](http://www.riverside.courts.ca.gov)

Issued April 11, 2022