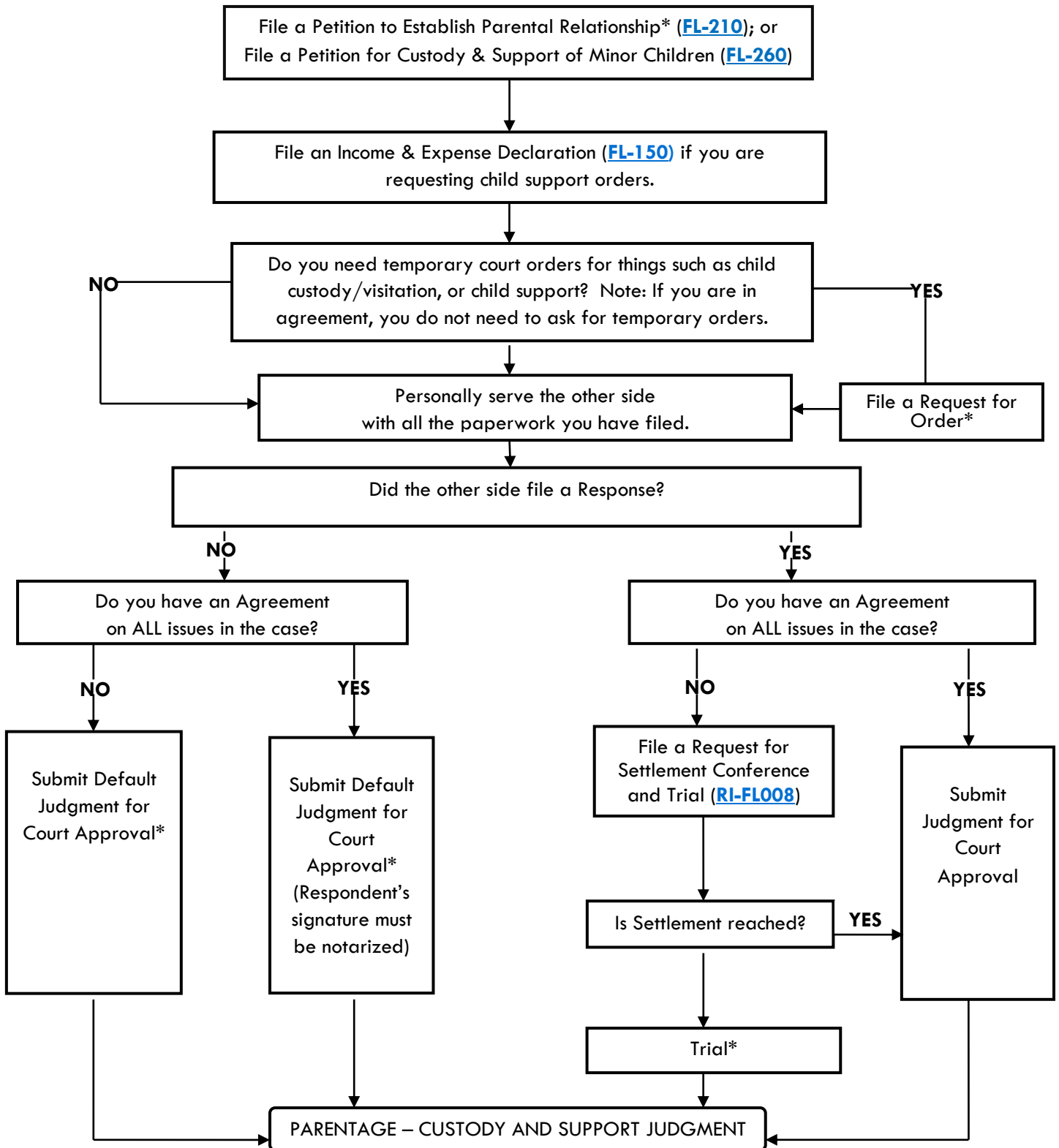


PATERNITY CASE FLOW CHART

(Petition to Establish Parental Relationship; Petition for Custody & Support)



*Riverside Superior Court provides free Family Law Workshops and Form Packets for these steps in the process.

Form packets are available at: www.riverside.courts.ca.gov/selfhelp/fl_packets.shtml

Workshop information is available at: Riverside: www.riverside.courts.ca.gov/cal_rivfamlawworkshop.pdf

Hemet/Murrieta: www.riverside.courts.ca.gov/cal_hemetfamlawworkshop.pdf

Indio: www.riverside.courts.ca.gov/cal_indfamlawworkshop.pdf

This chart shows the basic outline of a paternity case. Please consult with an attorney for legal advice concerning your individual case. If you do not have an attorney, assistance is available at various court Self-Help / Family Law Assistance Centers, and at the court's website. For more information please see: www.riverside.courts.ca.gov/selfhelp/familylaw.shtml